

Lantra Awards Level 2 Award in Land-based Activities (Ireland only)



At a glance...

Qualification

Delivery Method: Qualification

Prerequisites: There are no prerequisites for this qualification.

This qualification is for Learners aged 14 and above wishing to develop their knowledge, skills and behaviours in land-based activities. Learners that are under 16 and wish to register, Providers will need to obtain consent from the parent or guardian to undertake the qualification.

Introduction

This qualification has been designed for those wishing to develop the knowledge, skills and behaviours required to carry out various aspects of land-based activities. It will enhance the ability of those carrying out land-based activities to work safely, effectively and efficiently in a workplace or land-based environment, reducing unnecessary risk to themselves, others and the environment.

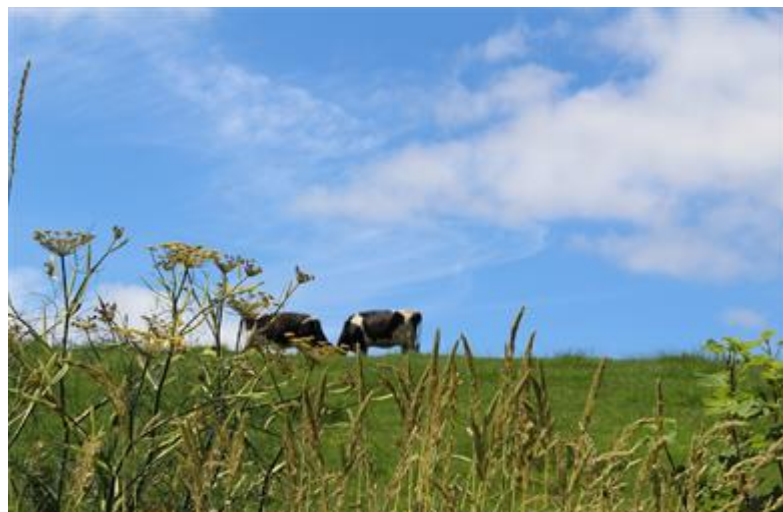
Overview in brief

This qualification provides the opportunity to gain a nationally recognised qualification, Lantra Awards Level 2 Award in Land-based Activities.

The finer details

Delivery methods will be a combination of practical and theory sessions with observation, assignment and portfolio assessments.

The qualification comprises of:



- one mandatory health and safety unit
- one development unit



Remaining units within the chosen pathway:

- Agriculture
- Animal care
- Equine
- Horticulture.

Who should attend?

The qualification is intended to offer Learners involved in a variety of land-based roles the opportunity to achieve a recognised national qualification that reflects the national standards for the type(s) of role(s) they perform. It is relevant for persons involved with all aspects of the land-based sector including horticulture, agricultural, equine, animal care.

As you'll appreciate, this course contains some practical activity that will require a minimum level of fitness.

If you have any concerns, please speak to the Provider.

What will be covered?

This land-based qualification aims to assess knowledge, skills, behaviours and understanding of:

- a range of land-based activities
- working effectively in a land-based environment, both independently and as part of a team
- awareness of own practices and ability to carry out a range of activities to the required industry standard
- health and safety legislation and how individuals can contribute to health, safety and wellbeing in land-based industries.

