

# Level 2 NVQ Diploma in Highway Electrical Systems - Public Lighting



## At a glance...

### Qualification

Duration Notes:	The expected total qualification time is 370 hours, however please note this may vary according to factors such as level of experience, modules or attachments selected, or the ratio of Instructors to Learners.
Delivery Method:	Classroom and practical observation and assessment
Recognised by:	National Highway Sector Scheme (NHSS).

### Introduction

Gain a nationally recognised Level 2 diploma for installing and maintaining public lighting in the highway electrical sector.

### Overview in brief

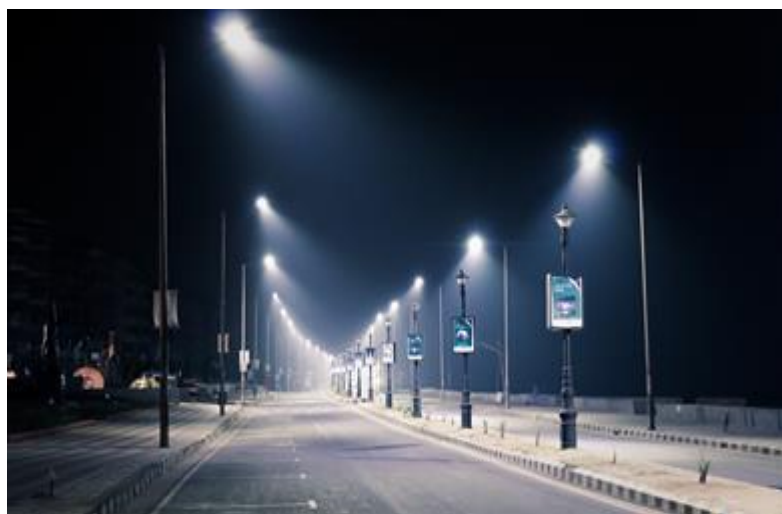
Lantra's Highway Electrical National Vocational Qualifications (NVQs) are the only qualifications that satisfy the requirements for competency as stipulated in the National Highway Sector Scheme (NHSS) 8 Quality Management document.

This qualification will measure your competence in installing and/or maintaining highway electrical equipment.

This qualification is also part of the highway electrical apprenticeship framework(s).

### The finer details

This qualification has been developed to give you the opportunity to develop your skills and demonstrate competence across the full range of activities that highway electrical



systems operatives need to be able to do as part of their everyday work.

This qualification aims to assess your knowledge and understanding in the following areas:



- Health and safety, environmental and working practices
- Establish effective working relationships
- Prepare for the installation and maintenance of highway electrical systems and equipment
- Identify and correct faults in electrical systems, equipment and components
- Install and connect highway electrical systems, equipment and components
- Install highway electrical infrastructure equipment
- Maintain highway electrical systems, equipment and components
- Carry out emergency work on highway electrical systems
- Apply surface protection to highway electrical systems
- Mechanical maintenance of highway electrical systems and equipment
- Co-ordinate the work of others.

The assessment will consist of multiple-choice questioning, practical observation of assessment activities and verbal questioning.

This qualification covers units for; Public Lighting. Further information on unit content can be found in the qualification specification.

If successful in meeting the required standards assessed, you will be issued with a Lantra certificate for your chosen pathway.

This qualification can be used to support the ECS Highway Electrical Registration Scheme (HERS) card as part of NHSS 8.

## Who should attend?

This qualification is for you if you are currently working - or will be working - installing and/or maintaining highway electrical equipment.

## What will be covered?

At the end of this qualification, your knowledge and understanding will have been assessed in the following areas:

- Applying health and safety and environmental legislation and working practices
- Maintaining effective working relationships



- Planning and preparing for the installation and maintenance of highway electrical systems and equipment
- Inspecting and testing highway electrical systems, equipment and components
- Identifying and correcting faults in electrical systems, equipment and components
- Installing and connecting highway electrical systems, equipment and components
- Maintaining highway electrical systems, equipment and components
- Commissioning highway electrical systems, equipment and components
- Carrying out emergency work on highway electrical systems
- Co-ordinating the work of others.

